

## FYTA12 EM vt16

Antal respondenter: 14  
Antal svar: 9  
Svarsfrekvens: 64,29 %

### General opinion

Give your opinion in the scale 1-5.

1 = very negative

2 = negative

3 = neutral

4 = positive

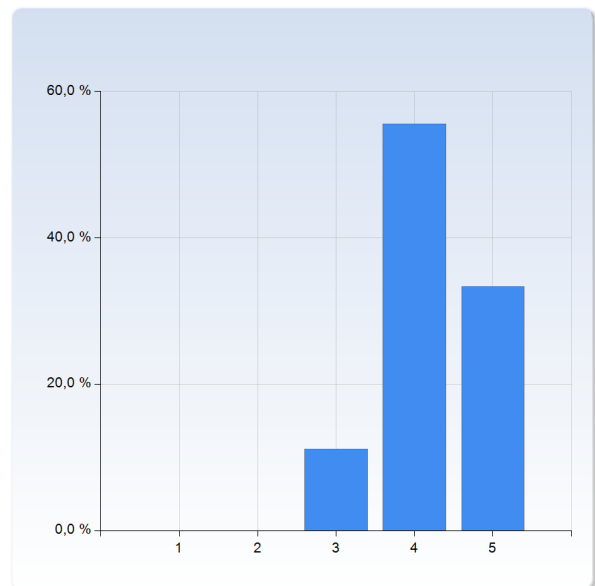
5 = very positive

***The comment field in the end is very important! It will help us understand what is to be kept when the grade is good, and what to change when the grade is poor.***

What is your general opinion of...

the course?

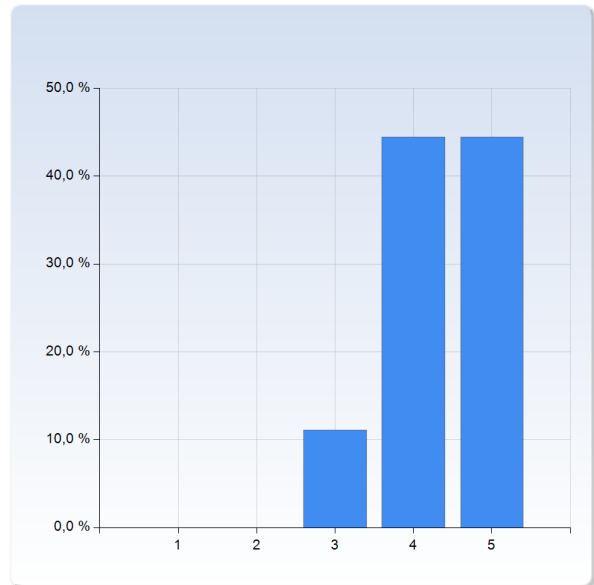
the course?	Antal svar
1	0 (0,0%)
2	0 (0,0%)
3	1 (11,1%)
4	5 (55,6%)
5	3 (33,3%)
Summa	9 (100,0%)



the course?	Medelvärde	Standardavvikelse
	4,2	0,7

## "Introduction to Electrodynamics" by Griffiths?

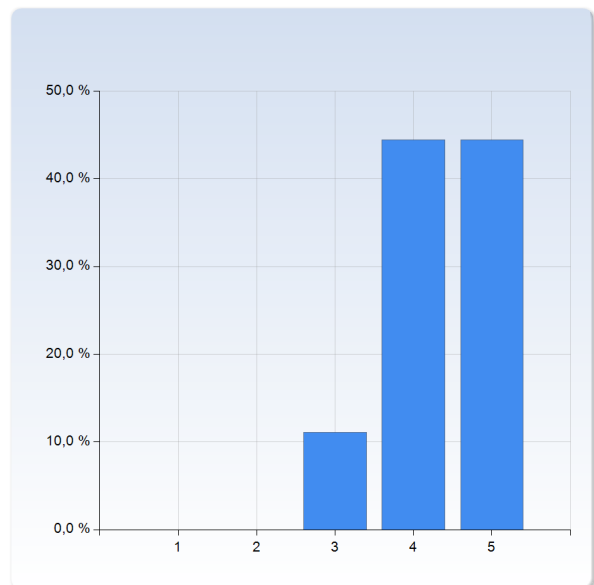
"Introduction to Electrodynamics" by Griffiths?	Antal svar
1	0 (0,0%)
2	0 (0,0%)
3	1 (11,1%)
4	4 (44,4%)
5	4 (44,4%)
Summa	9 (100,0%)



"Introduction to Electrodynamics" by Griffiths?	Medelvärde	Standardavvikelse
"Introduction to Electrodynamics" by Griffiths?	4,3	0,7

## the information about the course when it started?

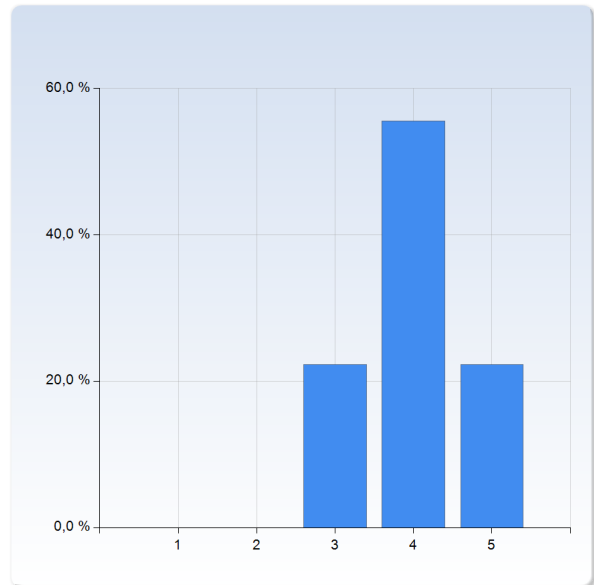
the information about the course when it started?	Antal svar
1	0 (0,0%)
2	0 (0,0%)
3	1 (11,1%)
4	4 (44,4%)
5	4 (44,4%)
Summa	9 (100,0%)



the information about the course when it started?	Medelvärde	Standardavvikelse
the information about the course when it started?	4,3	0,7

## the information about what was expected of you?

the information about what was expected of you?	Antal svar
1	0 (0,0%)
2	0 (0,0%)
3	2 (22,2%)
4	5 (55,6%)
5	2 (22,2%)
Summa	9 (100,0%)



	Medelvärde	Standardavvikelse
the information about what was expected of you?	4,0	0,7

Comment (*help us interpret your grades!*)

The book is really good but uses some strange notations.

## Teaching

Give your opinion in the scale 1-5.

1 = very negative

2 = negative

3 = neutral

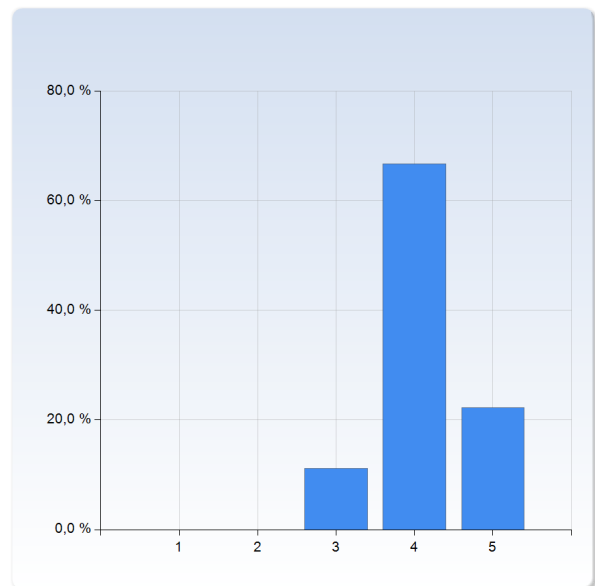
4 = positive

5 = very positive

What is your general opinion of...

the lectures with Johan Rathsmann?

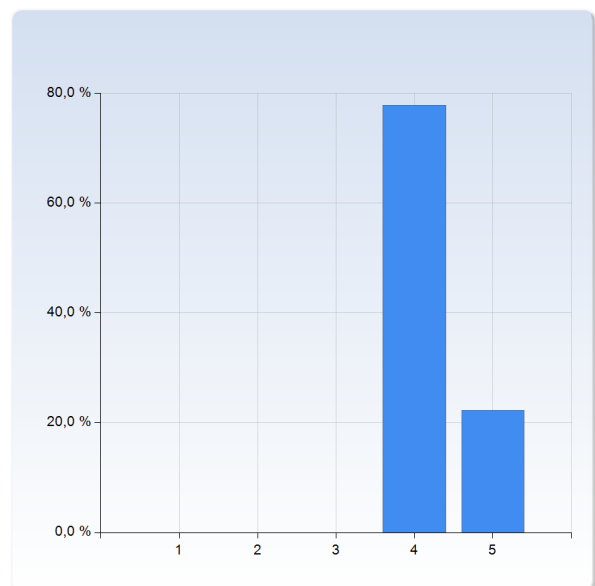
the lectures with Johan Rathsmann?	Antal svar
1	0 (0,0%)
2	0 (0,0%)
3	1 (11,1%)
4	6 (66,7%)
5	2 (22,2%)
Summa	9 (100,0%)



the lectures with Johan Rathsmann?	Medelvärde	Standardavvikelse
	4,1	0,6

the format of the problem solving sessions?

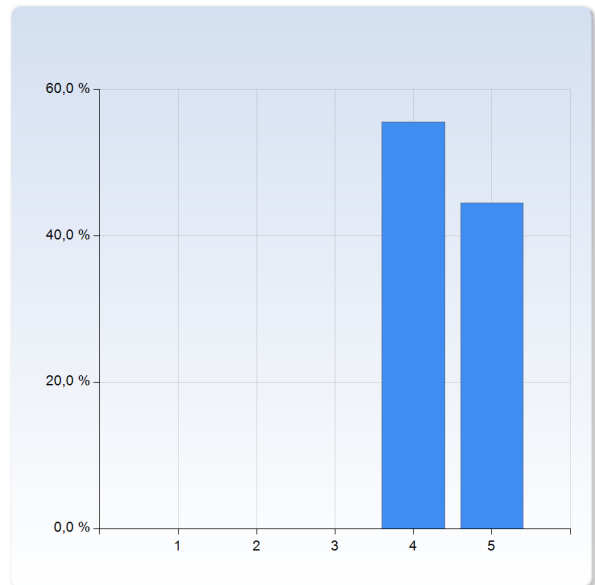
the format of the problem solving sessions?	Antal svar
1	0 (0,0%)
2	0 (0,0%)
3	0 (0,0%)
4	7 (77,8%)
5	2 (22,2%)
Summa	9 (100,0%)



	Medelvärde	Standardavvikelse
the format of the problem solving sessions?	4,2	0,4

### the exercises at the problem solving sessions?

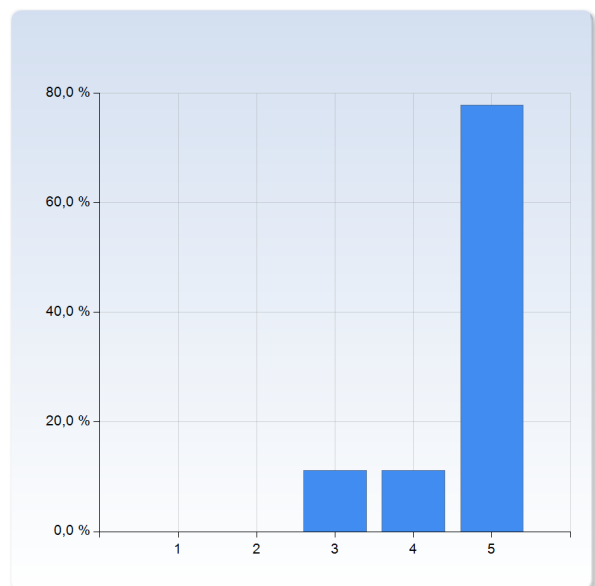
the exercises at the problem solving sessions?	Antal svar
1	0 (0,0%)
2	0 (0,0%)
3	0 (0,0%)
4	5 (55,6%)
5	4 (44,4%)
Summa	9 (100,0%)



	Medelvärde	Standardavvikelse
the exercises at the problem solving sessions?	4,4	0,5

### the balance between lectures and problem-solving sessions?

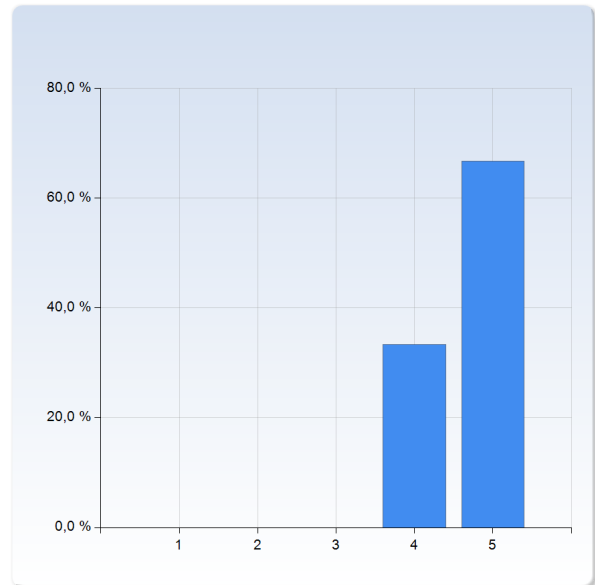
the balance between lectures and problem-solving sessions?	Antal svar
1	0 (0,0%)
2	0 (0,0%)
3	1 (11,1%)
4	1 (11,1%)
5	7 (77,8%)
Summa	9 (100,0%)



	Medelvärde	Standardavvikelse
the balance between lectures and problem-solving sessions?	4,7	0,7

## the SI-sessions

the SI-sessions	Antal svar
1	0 (0,0%)
2	0 (0,0%)
3	0 (0,0%)
4	3 (33,3%)
5	6 (66,7%)
Summa	9 (100,0%)



the SI-sessions	Medelvärde	Standardavvikelse
	4,7	0,5

### Comment

Good lectures, good pace which is easy to keep up with. Kofoed is great at the SI.

No major complaints

## Examination

Give your opinion in the scale 1-5.

1 = very negative

2 = negative

3 = neutral

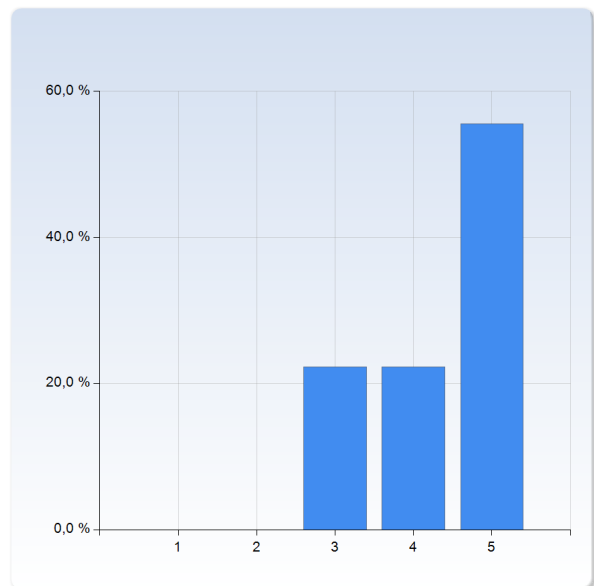
4 = positive

5 = very positive

What is your general opinion of...

the hand-in exercises?

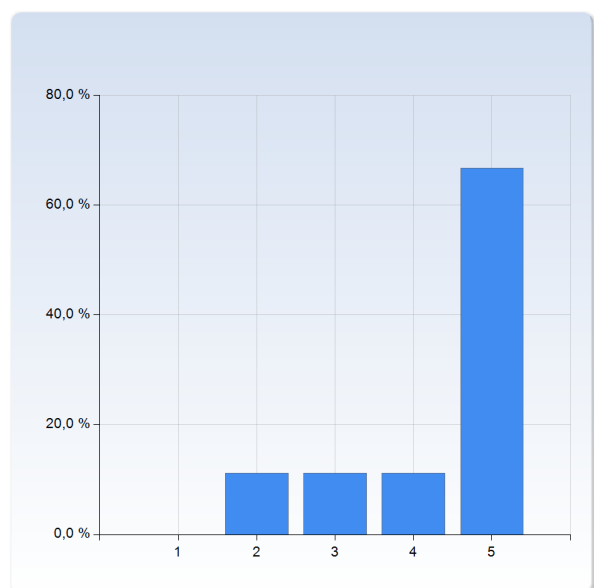
the hand-in exercises?	Antal svar
1	0 (0,0%)
2	0 (0,0%)
3	2 (22,2%)
4	2 (22,2%)
5	5 (55,6%)
Summa	9 (100,0%)



the hand-in exercises?	Medelvärde	Standardavvikelse
	4,3	0,9

the bonus-system?

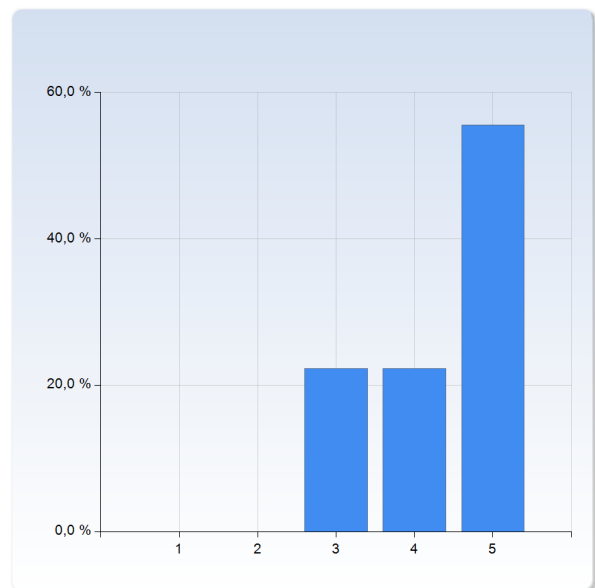
the bonus-system?	Antal svar
1	0 (0,0%)
2	1 (11,1%)
3	1 (11,1%)
4	1 (11,1%)
5	6 (66,7%)
Summa	9 (100,0%)



	Medelvärde	Standardavvikelse
the bonus-system?	4,3	1,1

### the written exam?

the written exam?	Antal svar
1	0 (0,0%)
2	0 (0,0%)
3	2 (22,2%)
4	2 (22,2%)
5	5 (55,6%)
Summa	9 (100,0%)



	Medelvärde	Standardavvikelse
the written exam?	4,3	0,9

*Comment (help us interpret your grades!)*

Good hand in exercises and it does feel good to go in to the exam with a few points already. The exam mainly covered the course content.

I am not a fan of the bonus system, but I guess I really needed it this semester...

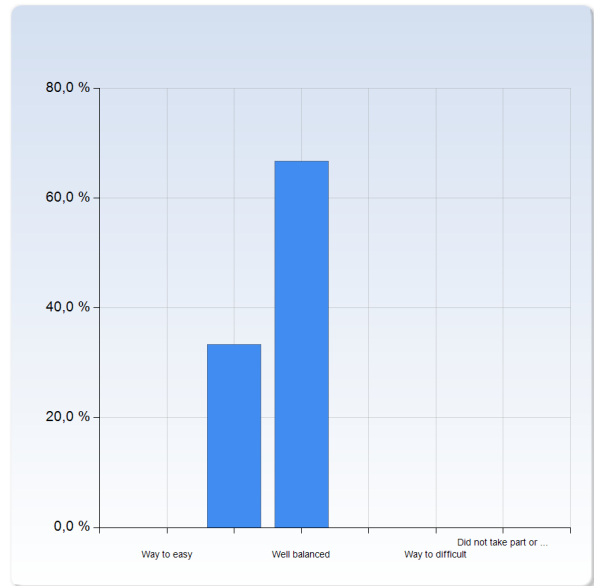


## Level of difficulty

Please rate your perception of the level of difficulty on the different elements of the course

### The lectures

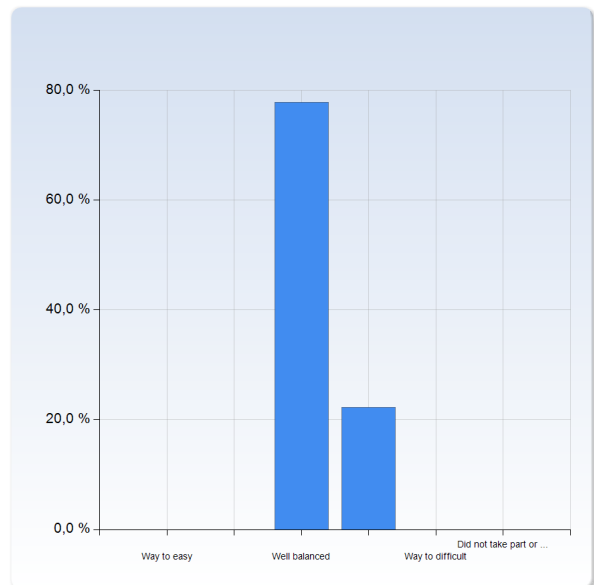
The lectures	Antal svar
Way to easy	0 (0,0%)
	3 (33,3%)
Well balanced	6 (66,7%)
	0 (0,0%)
Way to difficult	0 (0,0%)
Did not take part or no opinion	0 (0,0%)
Summa	9 (100,0%)



	Medelvärde	Standardavvikelse
The lectures	2,7	0,5

### The course literature

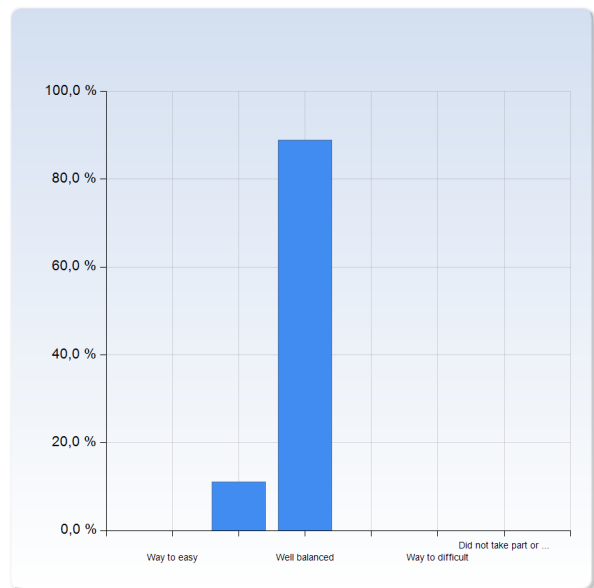
The course literature	Antal svar
Way to easy	0 (0,0%)
	0 (0,0%)
Well balanced	7 (77,8%)
	2 (22,2%)
Way to difficult	0 (0,0%)
Did not take part or no opinion	0 (0,0%)
Summa	9 (100,0%)



	Medelvärde	Standardavvikelse
The course literature	3,2	0,4

## The problems on the problems solving sessions

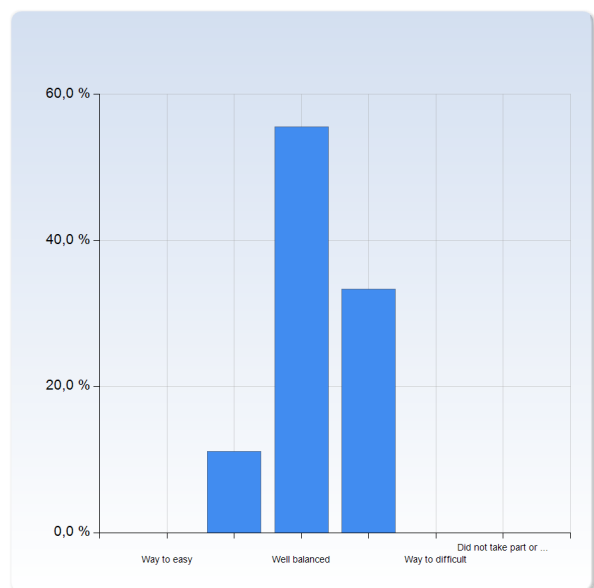
The problems on the problems solving sessions	Antal svar
Way to easy	0 (0,0%)
	1 (11,1%)
Well balanced	8 (88,9%)
	0 (0,0%)
Way to difficult	0 (0,0%)
Did not take part or no opinion	0 (0,0%)
Summa	9 (100,0%)



The problems on the problems solving sessions	Medelvärde	Standardavvikelse
	2,9	0,3

## The mandatory hand-in exercises

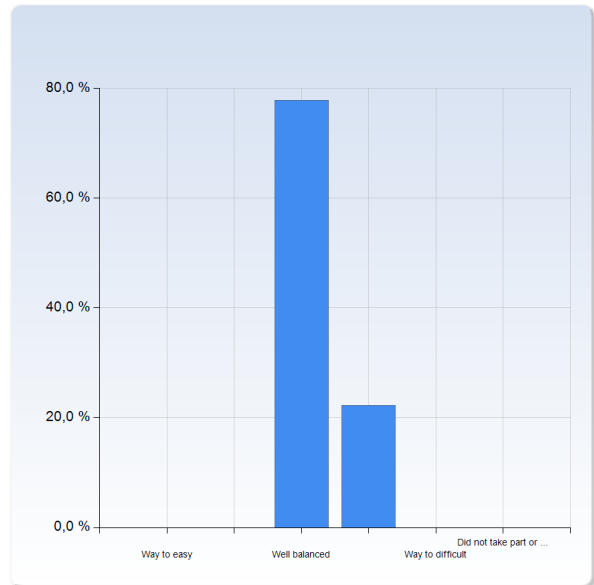
The mandatory hand-in exercises	Antal svar
Way to easy	0 (0,0%)
	1 (11,1%)
Well balanced	5 (55,6%)
	3 (33,3%)
Way to difficult	0 (0,0%)
Did not take part or no opinion	0 (0,0%)
Summa	9 (100,0%)



The mandatory hand-in exercises	Medelvärde	Standardavvikelse
	3,2	0,7

## The written exam

The written exam	Antal svar
Way to easy	0 (0,0%)
Well balanced	7 (77,8%)
Way to difficult	0 (0,0%)
Did not take part or no opinion	0 (0,0%)
Summa	9 (100,0%)



	Medelvärde	Standardavvikelse
The written exam	3,2	0,4

### Comments

Everything was at a balanced level.

When you are sitting at the lectures, it feels like you understand everything. But the when the exercises comes, they are hard to solve.

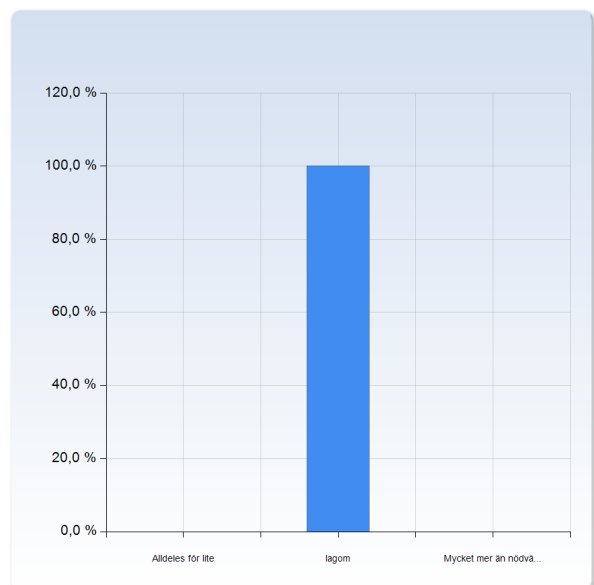
## The focus of the course

Below are learning goals from the course plan. Mark how much focus these goals got during the course, compared to what you feel would be needed.

After completion of the course, the student...

can apply Maxwell's equations in both microscopic as well as macroscopic formulation to deduce the field around simple, symmetric and static charge and current distributions.

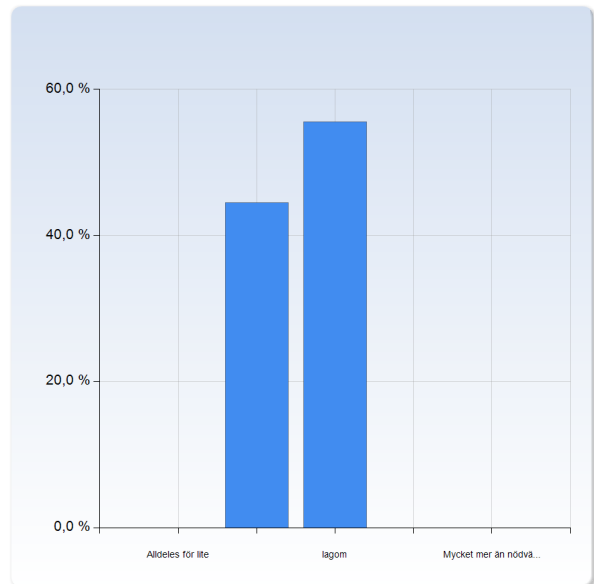
can apply Maxwell's equations in both microscopic as well as macroscopic formulation to deduce the field around simple, symmetric and static charge and current distributions.	Antal svar
Alldeles för lite	0 (0,0%)
Iagom	9 (100,0%)
Mycket mer än nödvändigt	0 (0,0%)
Summa	9 (100,0%)



	Medelvärde	Standardavvikelse
can apply Maxwell's equations in both microscopic as well as macroscopic formulation to deduce the field around simple, symmetric and static charge and current distributions.	3,0	0,0

### can analyse energy transport in different radiation phenomena both in vacuum and in linear media

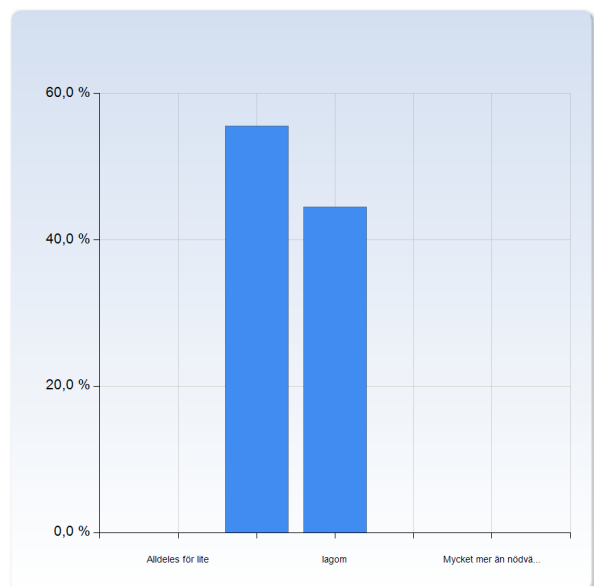
	Antal svar
can analyse energy transport in different radiation phenomena both in vacuum and in linear media	0 (0,0%)
Alldeles för lite	4 (44,4%)
lagom	5 (55,6%)
Mycket mer än nödvändigt	0 (0,0%)
Summa	9 (100,0%)



	Medelvärde	Standardavvikelse
can analyse energy transport in different radiation phenomena both in vacuum and in linear media	2,6	0,5

### can deal with foundational concepts such as the vector potential and gauge choice

	Antal svar
can deal with foundational concepts such as the vector potential and gauge choice	0 (0,0%)
Alldeles för lite	5 (55,6%)
lagom	4 (44,4%)
Mycket mer än nödvändigt	0 (0,0%)
Summa	9 (100,0%)



	Medelvärde	Standardavvikelse
can deal with foundational concepts such as the vector potential and gauge choice	2,4	0,5

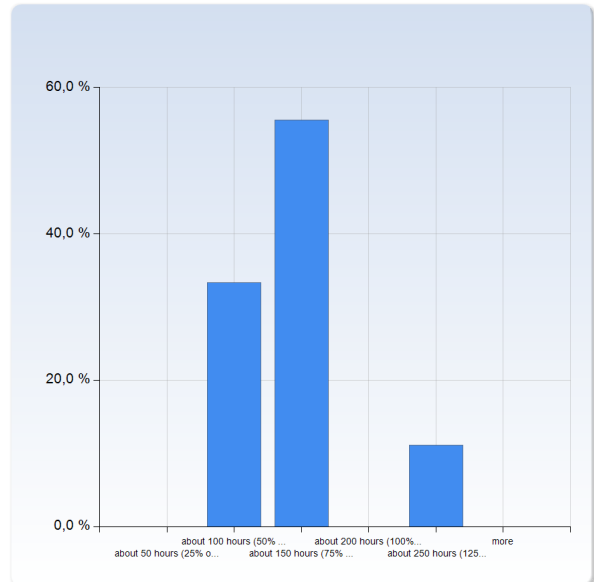
#### Comments

Maybe not quite enough of radiation and gauge choice but otherwise everything was covered.

Some more problems with gauge choice, to highlight the important of such might could have helped a little.

### How much time have you spent on the course? (In total you are supposed to spend about 200 hours or 25 work-days on a 7.5 hp course)

How much time have you spent on the course? (In total you are supposed to spend about 200 hours or 25 work-days on a 7.5 hp course)	Antal svar
about 50 hours (25% of intended time)	0 (0,0%)
about 100 hours (50% of intended time)	3 (33,3%)
about 150 hours (75% of intended time)	5 (55,6%)
about 200 hours (100% of intended time)	0 (0,0%)
about 250 hours (125% of intended time)	1 (11,1%)
more	0 (0,0%)
Summa	9 (100,0%)



How much time have you spent on the course? (In total you are supposed to spend about 200 hours or 25 work-days on a 7.5 hp course)	Medelvärde	Standardavvikelse
	2,9	0,9

Comments (for example on the distribution of the workload and whether you feel you have been able to perform at the level you wanted to)

Didn't spend enough time in the beginning but made up for that towards the ending.

I do study too little...

## Discrimination and harassment

**According to the Lund University *Policy for gender equality, equal treatment and diversity*, there is "zero tolerance of discrimination"**

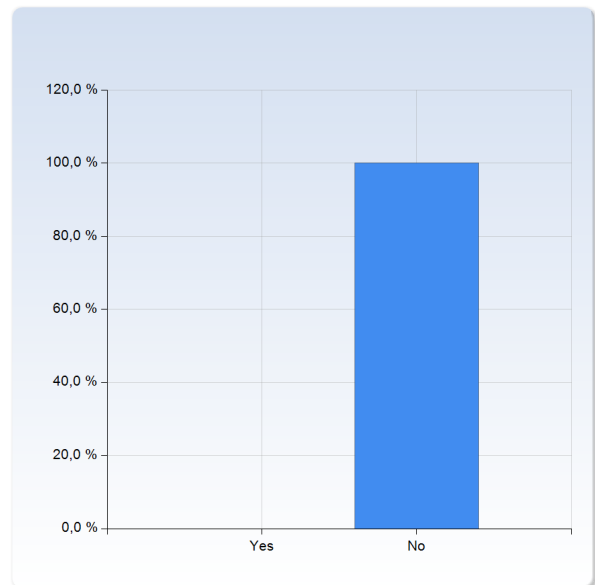
**Have you become aware of any cases of discrimination or harassment during the course?**

### Discrimination and harassment

According to the Lund University *Policy for gender equality, equal treatment and diversity*, there is "zero tolerance of discrimination"

Have you become aware of any cases of discrimination or harassment during the course?

	Antal svar
Yes	0 (0,0%)
No	9 (100,0%)
Summa	9 (100,0%)



Medelvärde Standardavvikelse

### Discrimination and harassment

According to the Lund University *Policy for gender equality, equal treatment and diversity*, there is "zero tolerance of discrimination"

Have you become aware of any cases of discrimination or harassment during the course?

2,0

0,0

## Equal treatment

According to the Lund University *Policy for gender equality, equal treatment and diversity*, everyone has the right to be "treated with respect and consideration and being given the opportunity to develop on the basis of his or her personal circumstances".

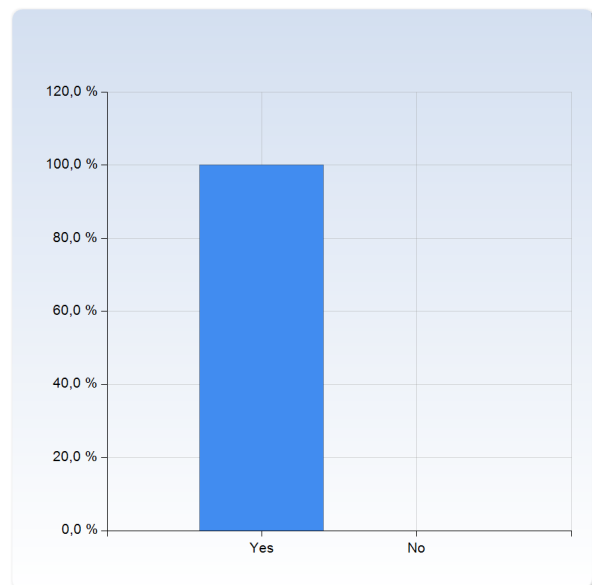
Do you think that everyone has been given equal opportunities during the course?

### Equal treatment

According to the Lund University *Policy for gender equality, equal treatment and diversity*, everyone has the right to be "treated with respect and consideration and being given the opportunity to develop on the basis of his or her personal circumstances".

Do you think that everyone has been given equal opportunities during the course?

	Antal svar
Yes	9 (100,0%)
No	0 (0,0%)
Summa	9 (100,0%)



Medelvärde Standardavvikelse

### Equal treatment

According to the Lund University *Policy for gender equality, equal treatment and diversity*, everyone has the right to be "treated with respect and consideration and being given the opportunity to develop on the basis of his or her personal circumstances".

Do you think that everyone has been given equal opportunities during the course?

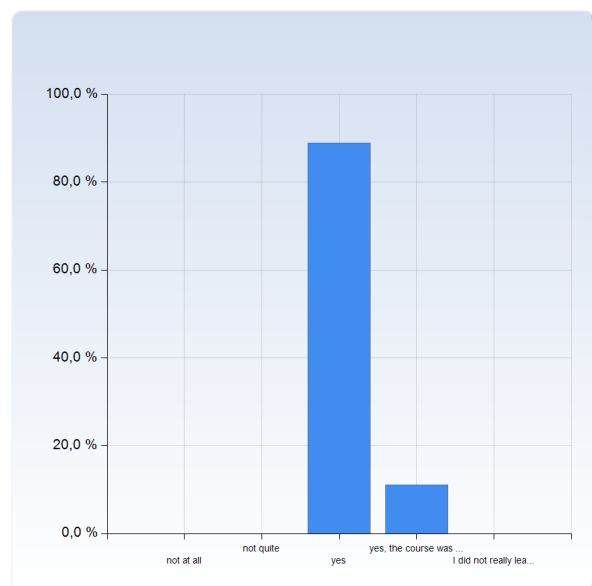
1,0

0,0

Did you have enough prior knowledge for this course?

Did you have enough prior knowledge for this course?

	Antal svar
not at all	0 (0,0%)
not quite	0 (0,0%)
yes	8 (88,9%)
yes, the course was a bit easy	1 (11,1%)
I did not really learn anything new	0 (0,0%)
Summa	9 (100,0%)



	Medelvärde	Standardavvikelse
Did you have enough prior knowledge for this course?	3,1	0,3

## What did you particularly like with the course?

What did you particularly like with the course?

Bra med tydliga föreläsninganteckningar.

Electromagnetics is cool!

The lectures were well structured and easy to follow.

Rathsman was always well prepared for each lecture

Maxwells' equations and the theoretical treatment of the scalar potential. I really enjoyed the fact that the course uses a few simple experimental facts to build the theory of electromagnetism from.

## What in the course do you think could improve?

What in the course do you think could improve?

Probably the radiation and gauge part.

I think at least I needed to solve more problems and exercises to realize that even if the theory seems easy and solid, the problems can get super hard to solve.

## Other comments (both positive and negative) on the course?

Other comments (both positive and negative) on the course?

A very open climate for discussions and I enjoy the format of < 20 students which makes it way more easy to follow the lecture and to ask more specific questions.