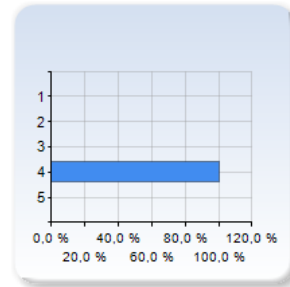


## FYTN09 vt13

Respondents: 6  
Answer Count: 1  
Answer Frequency: 16,67 %

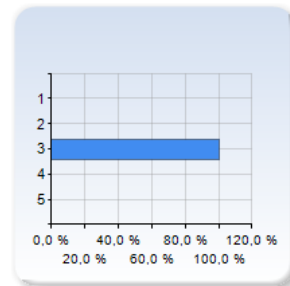
### What is your general opinion of... the course?

the course?	Number of Responses
1	0 (0,0%)
2	0 (0,0%)
3	0 (0,0%)
4	1 (100,0%)
5	0 (0,0%)
Total	1 (100,0%)



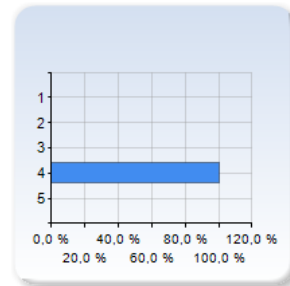
### Goldstein's book?

Goldstein's book?	Number of Responses
1	0 (0,0%)
2	0 (0,0%)
3	1 (100,0%)
4	0 (0,0%)
5	0 (0,0%)
Total	1 (100,0%)



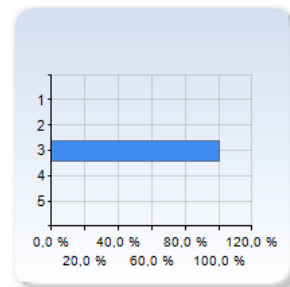
### the lectures with Roman Pasechnik?

the lectures with Roman Pasechnik?	Number of Responses
1	0 (0,0%)
2	0 (0,0%)
3	0 (0,0%)
4	1 (100,0%)
5	0 (0,0%)
Total	1 (100,0%)



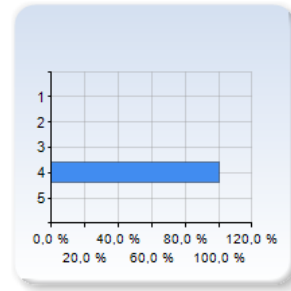
### the problem solving sessions?

the problem solving sessions?	Number of Responses
1	0 (0,0%)
2	0 (0,0%)
3	1 (100,0%)
4	0 (0,0%)
5	0 (0,0%)
Total	1 (100,0%)



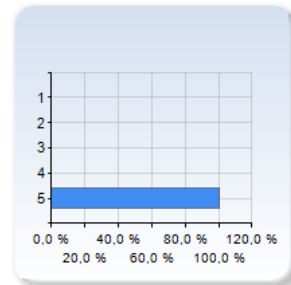
## the balance between lectures and problem-solving sessions?

the balance between lectures and problem-solving sessions?	Number of Responses
1	0 (0,0%)
2	0 (0,0%)
3	0 (0,0%)
4	1 (100,0%)
5	0 (0,0%)
Total	1 (100,0%)



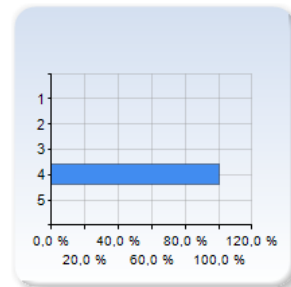
## the oral exam?

the oral exam?	Number of Responses
1	0 (0,0%)
2	0 (0,0%)
3	0 (0,0%)
4	0 (0,0%)
5	1 (100,0%)
Total	1 (100,0%)



## the hand-in exercises?

the hand-in exercises?	Number of Responses
1	0 (0,0%)
2	0 (0,0%)
3	0 (0,0%)
4	1 (100,0%)
5	0 (0,0%)
Total	1 (100,0%)

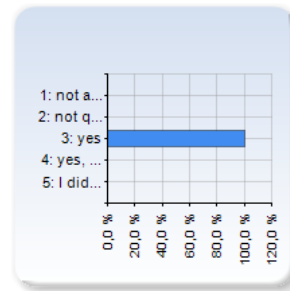


### Comment

It would be good idea to leave out some derivations in the lectures and instead have those as problems for the problem solving sessions (even if the derivations are shown in the book!). Now I spent a lot of time just doing algebra for the problems which felt a bit unnecessary. However, it is good that the hand-in exercises were mathematically demanding.

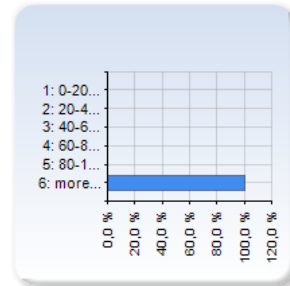
## Did you have enough prior knowledge for this course?

Did you have enough prior knowledge for this course?	Number of Responses
1: not at all	0 (0,0%)
2: not quite	0 (0,0%)
3: yes	1 (100,0%)
4: yes, the course was a bit easy	0 (0,0%)
5: I did not really learn anything new	0 (0,0%)
Total	1 (100,0%)



## How much time have you spent on this course? (100% means 10 weeks, 20 hours per week)

How much time have you spent on this course? (100% means 10 weeks, 20 hours per week)	Number of Responses
1: 0-20%	0 (0,0%)
2: 20-40%	0 (0,0%)
3: 40-60%	0 (0,0%)
4: 60-80%	0 (0,0%)
5: 80-100%	0 (0,0%)
6: more than 100%	1 (100,0%)
Total	1 (100,0%)



## Other comments (both positive and negative) on the course?