

Course Evaluation, FYTN11, Cosmology and Astroparticle Physics

Course Evaluation, FYTN11, Cosmology and Astroparticle Physics

Summary

Total number of answers 5
Filter no
Group by question no

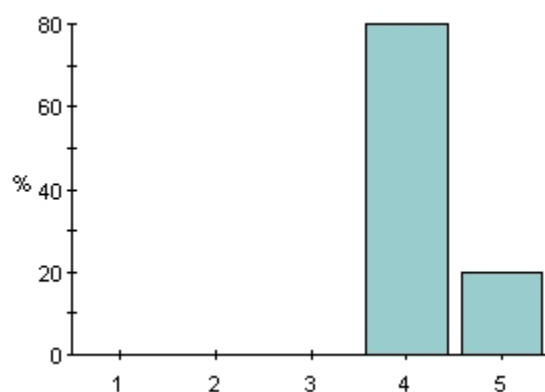
Give your opinion in the scale 1-5.

- 1 = very negative
- 2 = negative
- 3 = neutral
- 4 = positive
- 5 = very positive

Personal comments will be appreciated!

A. General

What is your general opinion of the course?



	%	#
1	0%	0
2	0%	0
3	0%	0
4	80%	4
5	20%	1
Total	100%	5
Mean		4.2

Comment

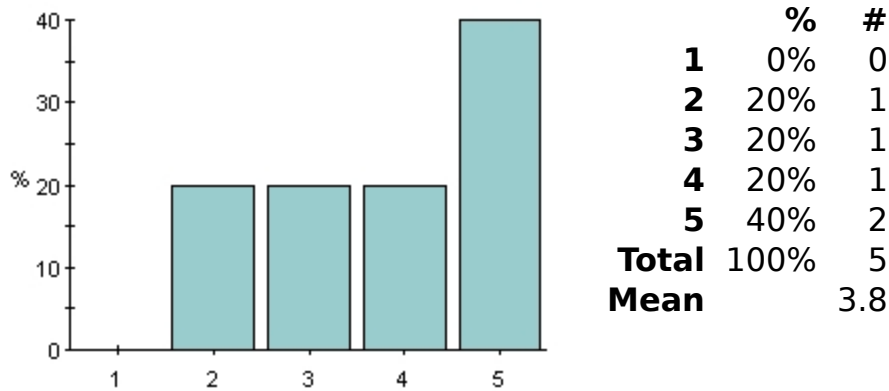
One has commented on this question

Grade = 4 (one comment)

— -very interesting topic -the presentations by students are a very good idea -thanks for the lecture notes in the net

B. Literature

What is your general opinion of Rubakov's book?



Comment

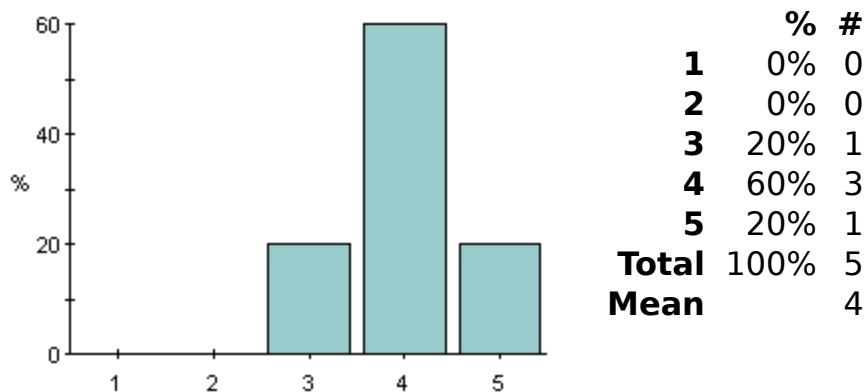
One has commented on this question

Grade = 5 (one comment)

— -very detailed

C. Lectures and problem solving sessions

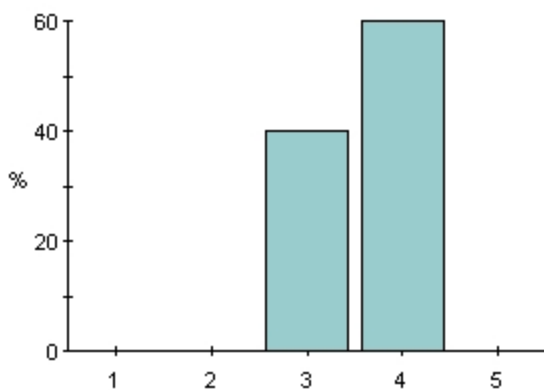
What is your general opinion of the lectures with Roman Pasechnik?



Comment

No comments on this question

What is your general opinion of the problem solving sessions?



	%	#
1	0%	0
2	0%	0
3	40%	2
4	60%	3
5	0%	0
Total	100%	5
Mean		3.6

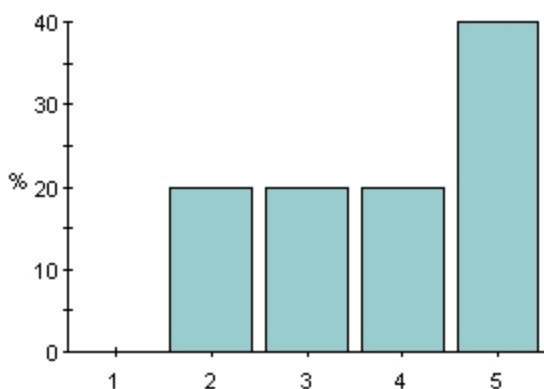
Comment

One has commented on this question

Grade = 4 (one comment)

— -the solutions were sometimes not that detailed

What is your general opinion of the balance between lectures and problem solving sessions?



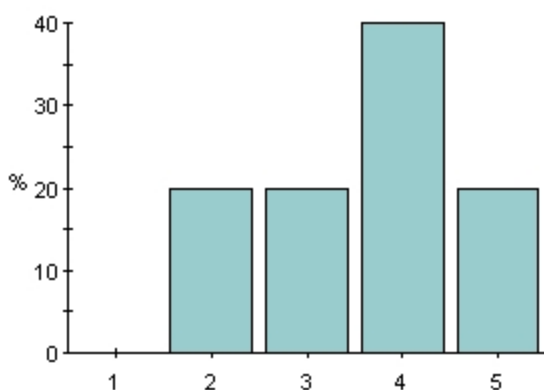
	%	#
1	0%	0
2	20%	1
3	20%	1
4	20%	1
5	40%	2
Total	100%	5
Mean		3.8

Comment

No comments on this question

D. Exam

What is your general opinion of the hand-in exercises?



	%	#
1	0%	0
2	20%	1
3	20%	1
4	40%	2
5	20%	1
Total	100%	5
Mean		3.6

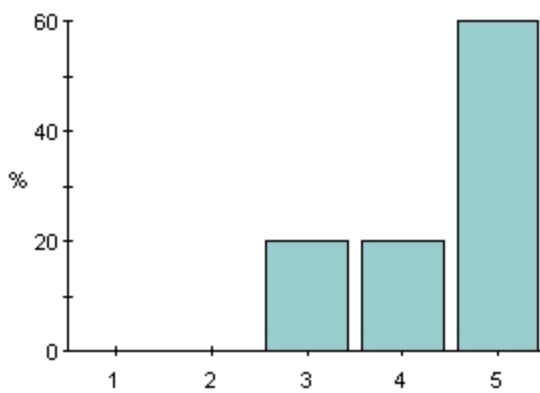
Comment

One has commented on this question

Grade = 4 (one comment)

— -sometimes it was hard to know which approximations should be used

What is your general opinion about the seminar assignment?

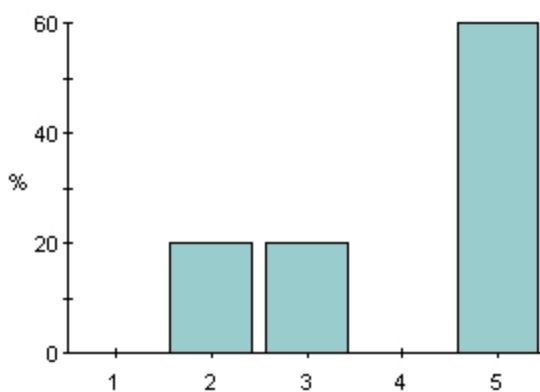


	%	#
1	0%	0
2	0%	0
3	20%	1
4	20%	1
5	60%	3
Total	100%	5
Mean		4.4

Comment

No comments on this question

What is your general opinion of the oral exam?

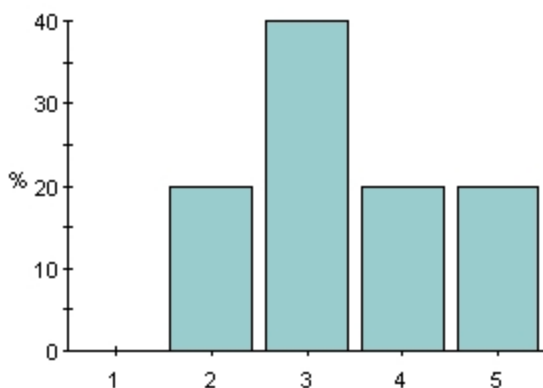


	%	#
1	0%	0
2	20%	1
3	20%	1
4	0%	0
5	60%	3
Total	100%	5
Mean		4

Comment

No comments on this question

Did you have enough prior knowledge for this course?



	%	#
1	0%	0
2	20%	1
3	40%	2
4	20%	1
5	20%	1
Total	100%	5
Mean		3.4

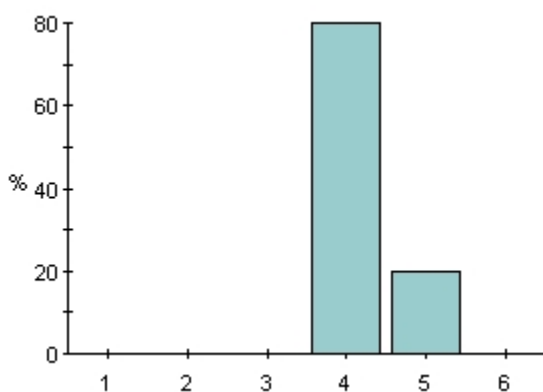
Comment

No comments on this question

E. Your efforts

In this part you are asked to estimate how much work you have committed to this course. In each case you should estimate a percentage with 1 meaning 0-20% up to 5 meaning 80-100%. If applicable, 6 means more than 100%.

How much time have you spent on this course (for a 7.5 point course 100% means five weeks, 40 hours per week)?



	%	#
1	0%	0
2	0%	0
3	0%	0
4	80%	4
5	20%	1
6	0%	0
Total	100%	5
Mean		4.2

Comment

No comments on this question

F. General comments

Other comments (both positive and negative) on the course?

Nobody has answered this question

Thank you for your participation!
